


Digital pathology for the primary diagnosis of breast histopathological specimens: an innovative validation and concordance study on digital pathology validation and training

Bethany Jill Williams,¹  Andrew Hanby,^{1,2} Rebecca Millican-Slater,¹ Anju Nijhawan,¹ Eldo Verghese^{1,2} & Darren Treanor^{1,2}

¹Department of Histopathology, Leeds Teaching Hospitals NHS Trust, and ²University of Leeds, Leeds, UK

Date of submission 7 July 2017

Accepted for publication 19 September 2017

Published online Article Accepted 22 September 2017

Williams B J, Hanby A, Millican-Slater R, Nijhawan A, Verghese E & Treanor D

(2018) *Histopathology* 72, 662–671. <https://doi.org/10.1111/his.13403>

Digital pathology for the primary diagnosis of breast histopathological specimens: an innovative validation and concordance study on digital pathology validation and training

Aim: To train and individually validate a group of breast pathologists in specialty-specific digital primary diagnosis by using a novel protocol endorsed by the Royal College of Pathologists' new guideline for digital pathology. The protocol allows early exposure to live digital reporting, in a risk-mitigated environment, and focuses on patient safety and professional development.

Methods and results: Three specialty breast pathologists completed training in the use of a digital microscopy system, and were exposed to a training set of 20 challenging cases, designed to help them identify personal digital diagnostic pitfalls. Following this, the three pathologists viewed a total of 694 live, entire breast cases. All primary diagnoses were made on digital slides, with immediate glass slide review and

Keywords: digital pathology, training, validation

reconciliation before final case sign-out. There was complete clinical concordance between the glass and digital impression of the case in 98.8% of cases. Only 1.2% of cases had a clinically significant difference in diagnosis/prognosis on glass and digital slide reads. All pathologists elected to continue using the digital microscope as the standard for breast histopathology specimens, with deferral to glass for a limited number of clinical/histological scenarios as a safety net.

Conclusion: Individual training and validation for digital primary diagnosis allows pathologists to develop competence and confidence in their digital diagnostic skills, and aids safe and responsible transition from the light microscope to the digital microscope.

Introduction

DIGITAL PATHOLOGY

Digital pathology can be defined as the use of a whole slide imaging (WSI) system to capture, transmit and store digital images of glass slides, to be viewed on a

computer screen. Digital slides can be read by multiple examiners in multiple locations, facilitating remote consultations, streamlining workflows, and reducing the time and financial costs of transferring glass slides between locations. Instantaneous access to multiple users renders digital slide technology invaluable in a number of pathology applications, including quality assurance programmes, frozen section diagnosis, multidisciplinary team meetings, clinicopathological conferences, expert panel/consensus boards, and education.

Address for correspondence: Dr Bethany Jill Williams, Histopathology Department, Bexley Wing, St James University Hospital, Beckett Street, Leeds LS9 7TF, UK. e-mail: bethany.williams2@nhs.net

DIGITAL PATHOLOGY IN PRIMARY DIAGNOSIS

Interest in the use of digital pathology for the primary diagnosis of histological specimens is flourishing, with a number of laboratories using digital images for primary diagnosis in at least a proportion of cases. (e.g. Utrecht, The Netherlands,¹ Linköping, Sweden,² and Leeds Teaching Hospitals NHS Trust and Coventry in the UK³). For digital pathology to be accepted and adopted on a large scale, regulatory bodies, diagnostic departments and individual pathologists will have to be convinced that a diagnosis made by a particular pathologist on a digital microscope is as good as a diagnosis made by the same pathologist on a conventional light microscope, and that no systematic error is introduced into the diagnostic process as a result of the technology. A recent systematic review of the diagnostic concordance of WSI and conventional light microscopy (LM) analysed data from 38 concordance studies, and demonstrated a mean diagnostic concordance of WSI and LM of 92.4%.⁴ In comparison, concordance between repeat LM reads of the same case was 93.4% in those studies ($n = 10$) that quoted it. There was a trend for increasing concordance in the more recent studies. The review found evidence to support a high level of diagnostic concordance for WSI overall. A recent systematic analysis of instances of diagnostic discordance in glass/digital comparisons of the same slides found 335 instances of diagnostic discordance, out of 8069 documented instances of a glass diagnosis being compared with a digital diagnosis (4%).⁵ The majority of these discordances would have had no clinical significance, and reflected diagnostic scenarios that are prone to intraobserver and interobserver variation in diagnosis, regardless of the diagnostic medium used. Potential pitfalls of digital diagnosis were identified, including the detection and grading of dysplasia, and the location of small diagnostic or prognostic objects, including micrometastases.

DIGITAL PATHOLOGY VALIDATION

There is little guidance available to the clinical pathologist on how to validate digital pathology for use for primary diagnosis in a real-world setting. The College of American Pathologists published a guideline for digital pathology validation in 2013,⁶ and this has formed the foundation of the majority of validation studies to date. The guidelines recommend that all departments adopting WSI for diagnosis should conduct their own validation, and that at least 60 specimens should be evaluated, to assess intraobserver variation in diagnosis on digital slides and

glass slides, with a washout period of at least 2 weeks between digital and glass reads of cases. Although this methodology provides a good baseline validation of a departmental WSI system, it may not be enough to convince individual histopathologists that they are competent and confident in making primary diagnoses on the digital microscope.

DIGITAL PATHOLOGY IN BREAST PATHOLOGY

Digital slides are used in undergraduate and postgraduate medical education, with breast histopathology images being accessible online at sites including the online atlas for breast pathology (www2.webmicroscope.net) and the virtual microscopy website of the University of Leeds (www.virtualpathology.leeds.ac.uk). In research, digital slides allow for simplified centralised review of breast cancer material in large multicentre studies, an option that has been explored by the Prospective Study of Outcomes in Sporadic versus Hereditary breast cancer (POSH) cohort study, among many others.⁷ In the LORIS trial, which aims to address the overtreatment of screen-detected ductal carcinoma *in situ* (DCIS) trial entry depends on real-time review of digital slides rather than glass slides to assess eligibility.⁸

In clinical pathology, breast pathologists are under increasing pressure in terms of breast cancer case volume, case complexity, and the need for rapid evaluation and review to meet cancer diagnostic and therapeutic targets. A number of digital pathology validation studies have focused on the use of whole slide images for the diagnosis of breast biopsies. Al Janabi *et al.* demonstrated a 93% concordance rate in a single-reader study of 100 breast biopsies,⁹ and Campbell *et al.* found that intraobserver concordance between digital and glass diagnosis of 85 breast biopsies for three pathologists was 95.4%.¹⁰ Both studies identified discordant diagnoses regarding a select group of diagnoses: differentiation between hyperplasia and atypical ductal hyperplasia, the differentiation of benign phyllodes tumours from fibroadenomas, and the identification of foci of microinvasion/lymphovascular invasion. In their validation study, Reyes *et al.* found that digital/glass variation in diagnosis varied between 1% and 4% for their three pathologists, and, in all cases of discordance, the diagnostic issue was the differentiation of ductal hyperplasia from atypical hyperplasia.¹¹

The majority of breast digital pathology validation studies in the literature have focused on biopsy specimens, whereas, in real practice, a large proportion of the pathologist's time is spent viewing resection

specimens, for which a checklist of histological parameters of an excised tumour need to be assessed and recorded. Shaw *et al.* published their experience in reviewing both glass and digital slides of breast cancers from the POSH breast cancer cohort study.⁷ Nine pathologists collected data items from digital slides of breast tumours, and then reviewed the glass slides at a later date. Diagnostic performance with the digital slides was comparable to that with conventional LM. There was better agreement on degree of tubule formation between different reviewers when digital slides were used than when glass slides were used. The authors suggest that this supports the assertion that the whole slide view provided in digital pathology permits superior assessment of the architecture of a lesion than that provided by LM. A recent non-inferiority study compared reads of 299 breast cases by four pathologists, and found no significant difference in the incidence of major discordances with digital microscopy versus LM.¹²

Leeds Teaching Hospitals NHS Trust made the decision to pilot digital pathology for the primary diagnosis of breast histopathology specimens, utilising a novel validation protocol that offered participant histopathologists digital microscopy training, exposure to challenging cases, and a risk-mitigated early conversion to a full digital slide workload.

Methods

The study was performed in the histopathology department of St James University Hospital, Leeds, UK, a large academic institution with full histopathologist subspecialisation, which processes in the region of 250 000 haematoxylin and eosin (H&E)-stained histology slides per annum. Three consultant breast histopathologists with 35 years of combined practice were recruited to participate in the validation study. Scanning of all breast histopathology glass slides prior to laboratory send-out was initiated in August 2016. Scanning was performed with a single Aperio AT2 scanner for standard-dimension slides (Leica, Vista, CA, USA), and a single CS2 scanner (Leica) for large slides. Standard slides were scanned at $\times 40$ equivalent magnification, and large slides at $\times 20$ equivalent magnification. Automated scanning processes (selection of scanning area and placement of focus points) were quality-checked and repeated manually by a laboratory technician where necessary. Digital images were stored in a remote digital archive, along with relevant clinical information, including a scanned copy of the original request form, and retrieved with

E-SLIDE MANAGER software (Leica). Images were viewed by consultant pathologists using Leeds VIRTUAL MICROSCOPE viewing software (University of Leeds, Leeds TH NHS Trust¹³) on medical-grade Coronis Fusion 6 MP, 30.40-inch screens (Barco, Kortrijk, Belgium).

The validation protocol has been published as an appendix to the Royal College of Pathologists Guidelines for Digital Pathology, where it is cited as an example of best practice. The validation structure consisted of three phases: a training phase (T), a validation training set phase (V1), a live reporting validation phase (V2), and a summary phase (S) (see Table 1 for an overview of the validation procedure). Prior to the initiation of training, each participant completed a questionnaire detailing their prior experience of, and attitude towards, digital pathology.

TRAINING PHASE (T)

In T, each participant received a 1-h individual session in the basic use of the digital pathology slide

Table 1. Summary of validation phases

Phase	Overview
Training (T)	One-to-one formalised training in digital microscope use
	Observed practice with feedback
Validation—Training cases (V1)	Training set of 20 challenging and informative specialty-specific cases
	Participant views digital slides, make notes on diagnosis, immediately checks corresponding glass slides, and notes any difference in opinion
	Group discussion
	Identify and mitigate pitfalls
Validation—Live reporting (V2)	All cases scanned prospectively
	Diagnosis made on digital slides with reconciliation with glass slides before sign-out
	Difficulties recorded and discussed
	Library of problematic cases assembled and reviewed with group
Summary and recommendations (S)	Validation document produced with each pathologist, documenting concordance/discordance
	Recommendations made for scope of digital practice/further training

viewer (Leeds Virtual Microscope), and the image management software (E-SLIDE MANAGER), and was given a user manual. Participants were observed opening and evaluating cases, and given feedback regarding the effective use of input modalities (mouse and keyboard shortcuts). The participant could request additional training as required.

VALIDATION 1—TRAINING SET (V1)

In V1, each participant received a training set of 20 cases, in glass slide and digital slide formats.

The training set was designed to encompass the breadth of breast diagnoses, and confront the participant with cases that might be challenging to diagnose digitally. The cases were chosen on the basis of clinical relevance to our department, and the challenging digital cases were selected on the basis of a review of the literature concerning digital discordance⁵ (Table 2). Participants viewed the training set in their own time. For each case, the digital slides were viewed first, and pathologists then recorded their diagnoses, and their levels of confidence in their diagnosis, on a Likert scale from

Table 2. Validation training case set

Case	Diagnosis	Domains explored
1	Benign phyllodes tumour	Diagnosis (benign fibroepithelial)
2	Fibrocystic change, weddelite calcification	Diagnosis (benign tissue), identification of weddelite calcification
3	Fat necrosis	Diagnosis (benign/inflammatory condition)
4	Sparse residual ductal carcinoma, post-chemotherapy	Diagnosis (malignant epithelial), grading, immunohistochemistry interpretation (sparse tumour cells)
5	Invasive ductal carcinoma, grade 2, neuroendocrine features	Diagnosis (malignant epithelial), grading, immunohistochemistry interpretation, identification of neuroendocrine features
6	High-grade ductal carcinoma <i>in situ</i> with small, grade 1 invasive component	Diagnosis (malignant epithelial), grading, identification of small invasive component
7	Atypical ductal hyperplasia, flat epithelial atypia, microcalcification, sclerosed papilloma	Diagnosis (benign and atypical epithelium, papillary lesion), identification of microcalcification
8	Invasive ductal carcinoma, grade 3	Diagnosis (malignant epithelial), grading, immunohistochemistry interpretation
9	Paget's disease of nipple	Diagnosis (malignant epithelium), immunohistochemistry/special stain interpretation
10	Fibroadenoma with ductal carcinoma <i>in situ</i>	Dual diagnosis (malignant epithelium and fibroepithelial lesion)
11	High-grade ductal carcinoma <i>in situ</i> , no calcification	Diagnosis (malignant epithelium), grading, identification that no microcalcification is present
12	Benign sclerotic lesion	Diagnosis (benign lesion), immunohistochemistry interpretation
13	5-mm lymph node metastasis	Diagnosis (locate metastasis)
14	Organising haematoma	Diagnosis (benign/inflammatory)
15	Apocrine metaplasia with atypia	Diagnosis (borderline lesion)
16	Lymph node with micrometastasis	Diagnosis (locate micrometastasis)
17	Nipple dermatitis	Diagnosis (benign dermatosis)
18	Mucinous carcinoma, grade 1	Diagnosis (malignant epithelial), grading, identification of mucin
19	Pleomorphic lobular carcinoma, grade 2	Diagnosis (malignant epithelial), grading, identification of pleomorphic lobular component
20	Invasive lobular carcinoma, grade 2	Diagnosis (malignant epithelial), grading, identification of classic lobular features

1 to 7, where 1 corresponded to not at all confident, and 7 to very confident.

Pathologists then viewed the glass slides for the same case, immediately after the digital read, and recorded any alterations in their diagnoses, and their confidence in their glass slide diagnosis. When all participants had completed the training set, the results were discussed in a group with the validator, and all participants reviewed discordant cases on glass and digital slides. Pathologists identified the types of case that they found problematic on digital slides, so that they could ensure that they were vigilant for these types of error in the next phase, V2.

VALIDATION 2—LIVE CASES (V2)

In V2, the totality of each participant's breast pathology workload was scanned prospectively. The pathologists made their primary diagnoses on digital slides, and recorded them in a spreadsheet, along with their confidence in their diagnoses. All cases were then checked on glass before final reporting, and any modification to the diagnosis was recorded, along with the glass slide confidence in diagnosis, and the preferred diagnostic medium for each case. Pathologists were also asked to record any technical failures—i.e. out-of-focus digital slides, or those with any digital artefact that might preclude confident or safe diagnosis.

All discordances were discussed at weekly to fortnightly validation meetings, during which digital and glass slides were reviewed by all available participants and the validator.

When each participant had viewed 2 months whole time equivalent workload (estimated at ≈ 200 cases on the basis of departmental data), their diagnostic spreadsheets were analysed by the validator, and concordance and discordance data were summarised. These data were discussed between each participant and the validator, and the scope of that pathologist's future digital pathology practice was agreed upon, with specific criteria being documented for cases that require a check on glass slides before final sign-out.

Results

VALIDATION 1—TRAINING SET (V1)

Each participant viewed the same 20 training cases on digital slides and glass slides, consisting of 60 slides in total. The mean diagnostic concordance for all participants was 92% (range 80–100%).

Discordant cases concerned the following areas of diagnosis: the mitotic count component of invasive tumour grading, failure to detect weddelite calcification, micrometastasis detection, and the recognition of ductal atypia.

VALIDATION 2—LIVE CASES (V2)

The participants viewed a total of 694 complete breast histopathology cases, consisting of 15 000 slides. The cases were representative of the specimen type and diagnostic category mix found in the departmental breast workload (Tables 3 and 4).

In the course of the validation, a technical failure rate of 1.0% was observed—these were cases for which scanning artefact or focus issues with digital slides resulted in the pathologist rejecting the digital slides and making a diagnosis on glass slides. There was complete clinical concordance between the glass and digital impression of the case in 98.8% of cases. Only 1.2% of cases had a clinically significant difference in diagnosis/prognosis on glass and digital slides (Table 5).

All discordances were reviewed on glass and digital slides by the validation group and trainer. Clinically significant discordances concerned the mitotic count component of invasive tumour grading, identification of weddelite calcification, identification of isolated tumour cells, assessment of a fibroepithelial lesion for cellularity, and identification of focal epithelial atypia (see Figure 1 for example images). The two most significant discordances both concerned the diagnosis of DCIS. In one case, a small focus of DCIS was missed on the digital read of an otherwise B3 screening case, whereas in another case a small focus of DCIS was correctly diagnosed on the digital slide in a large, multislide case, but missed on the initial glass review of the case. The pathologist had to revert to the

Table 3. Case mix by specimen type

Specimen type	Number of cases
Vacuum-assisted biopsy	159
Core biopsy	397
Wide local excision	28
Mastectomy	27
Other excision	55
Immunostains/special stains	28
Total	694

Table 4. Case mix by diagnostic category

Diagnostic category	Number of cases
B1 (normal tissue)	85
B2 (benign lesion)	308
B3 (lesion of uncertain malignant potential)	51
B4 (suspicious)	5
B5a (malignant— <i>in situ</i>)	43
B5b (malignant—invasive)	145
LB1 (no lymphoid tissue)	1
LB2 (benign lymphoid tissue)	22
LB5 (malignant, metastatic carcinoma, or other)	5
Other	29
Total	694

digital case to locate the corresponding glass slide, and was then able to identify the DCIS on the glass slide, which had been overlooked. The use of glass slides only for this case could have resulted in misclassification of a B5a case as B2 (Table 6).

DIAGNOSTIC CONFIDENCE AND DIAGNOSTIC MODALITY PREFERENCE

The mean diagnostic confidence (on a Likert scale from 0 to 7) was similar for each pathologist for digital slides and for glass slides (Table 7), although the range of diagnostic confidence scores was dramatically different for one pathologist (0–7 on digital slides versus 6–7 on glass slides).

All of the participant pathologists identified a proportion of cases for which they preferred to use glass slides over digital slides, although digital slides were judged to be superior or equivalent to glass slides in the vast majority of cases (Figure 2). Cases for which

glass slides were preferred all involved mitotic counting, weddelite detection, and lymph node searches.

BELIEFS ABOUT DIGITAL PATHOLOGY EFFICIENCY

Prior to their validation procedure, the pathologist group predicted that viewing digital slides would be slightly slower than viewing glass slides, and that breast resections would be much slower to report with the use of digital slides. After the validation procedure, the pathologists reported that they perceived their digital reads of resection cases and large/multi-level biopsies to be much faster with digital slides than with glass slides, and resections to be either slightly faster or much faster on the digital microscope.

Prior to the validation procedure, pathologists believed that the most relevant barriers to digital pathology adoption were an increased time required to view digital slides as compared with glass slides, pathologists' lack of exposure to digital pathology, and pathologists' resistance to change. Following the validation procedure, they identified the chief barriers to digital pathology adoption as being financial costs to the department and the time taken to scan slides in the laboratory.

When asked to list the principal benefits of digital slides over glass slides, pathologists listed ease of access to previous biopsies/linked specimens, more efficient diagnosis of large cases/multislide biopsies, diagnostic utility of the low-power overview of the slide, more efficient delivery of digital slides to the pathologist's desktop, enhanced opportunities to teach trainees, and ergonomic benefits.

Discussion

Digital pathology has the potential to transform the way in which breast pathology services are delivered. Rapid transfer of images across geographical

Table 5. Live reporting validation statistics

	Pathologist 1	Pathologist 2	Pathologist 3	All pathologists
Technical failure rate (%)	0.7	1.4	1.0	1.0
Complete concordance (%)	95.0	96.2	97.4	96.2
Any observable difference (%)	5.0	3.8	2.6	3.8
Complete clinical concordance (%)	99.3	99.1	98.5	98.8
Clinically significant observable difference	0.7	0.9	1.5	1.2

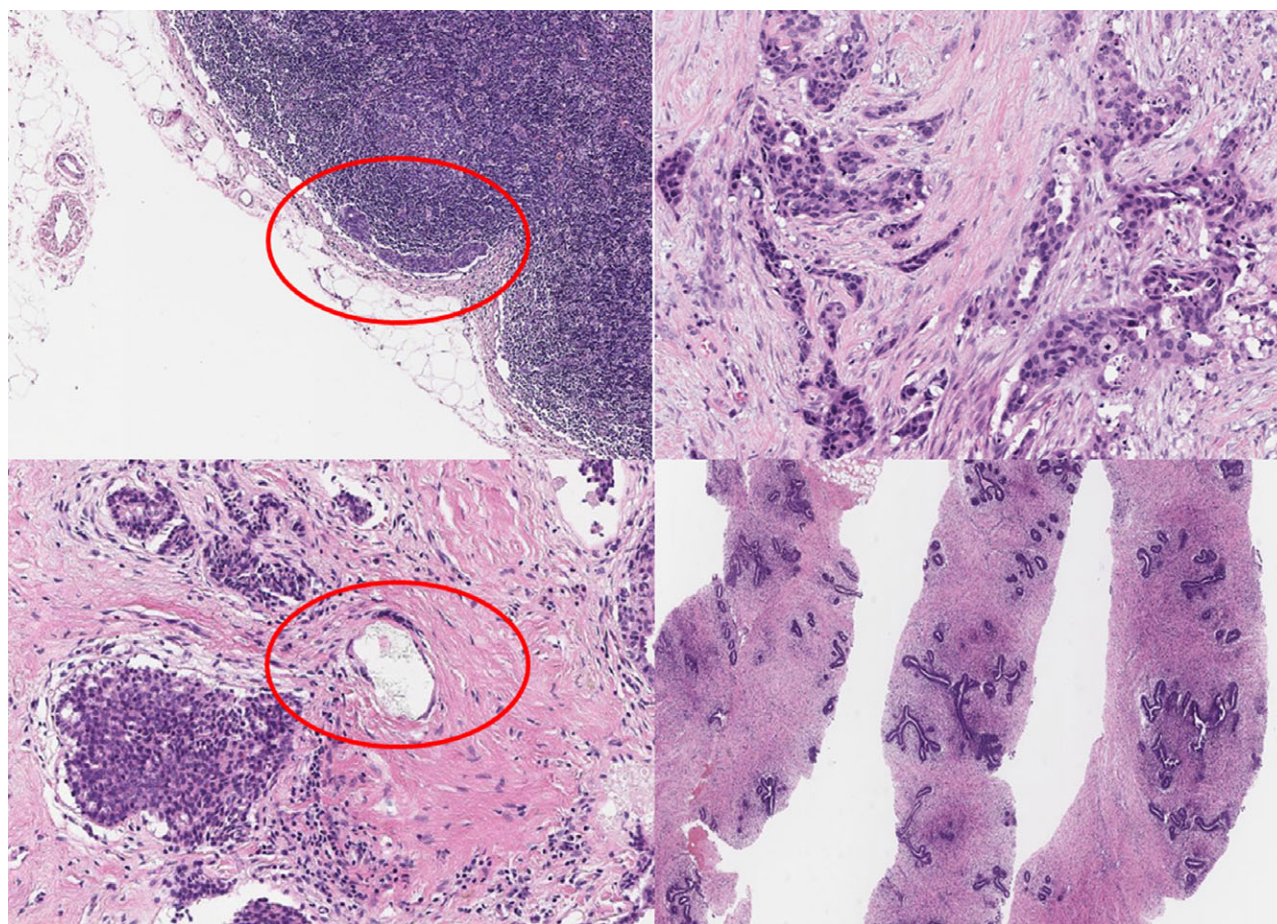


Figure 1. Examples of discordant validation cases. Clockwise from top left: missed micrometastasis in a sentinel lymph node; difficulty in identifying mitotic figures; missed weddellite calcification; cellularity of stroma overcalled.

boundaries can allow for more efficient dispersal of pathology workload between linked hospitals, and make the best use of pathologists' time. Rapid access to second opinions on challenging cases, and increased collaboration between pathologists on cases, could lead to significant improvements in the quality of pathology diagnosis.

The successful adoption of digital pathology for primary diagnosis in a department is dependent on individual pathologists, many with decades of experience reporting on a light microscope, engaging with a new technology, educating themselves on its limitations, and actively learning how to use software and hardware efficiently. As with the adoption of any new diagnostic procedure, patient safety should be paramount. The US Food and Drugs Administration guidance to manufacturers recommends that medical devices (including WSI systems) should be able to demonstrate established safety and effectiveness.¹⁴ The new digital pathology guidelines published by the

Royal College of Pathologists also describe the need for individual pathologists to be validated with sufficient rigour to satisfy an internal or external observer that safety and clinical effectiveness are maintained. The document also emphasises that validation should occur in a real-world context.

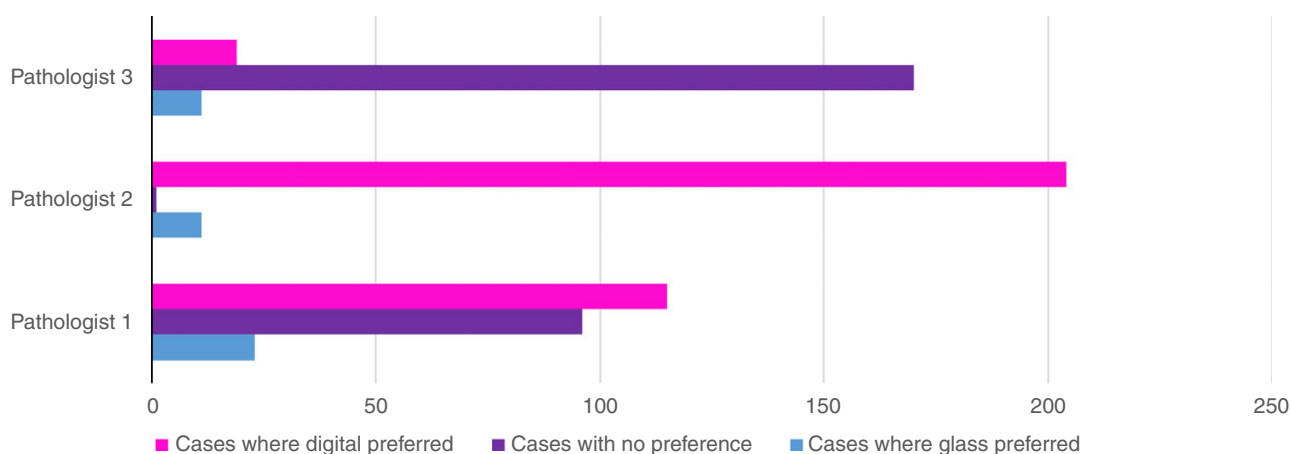
This study documents the first instance of the use of the novel validation and training protocol for digital primary diagnosis of histological specimens recommended as an example of best practice in the Royal College of Pathologist's Guidelines for Digital Pathology (2017). The philosophy of this validation protocol differs greatly from the approach of the College of American Pathologists Guideline⁶ and of other non-inferiority studies. First, it is centred on the individual pathologist rather than a department as a whole, and second, it is competence-driven rather target-driven. This approach takes into account the variability in IT competencies, diagnostic experience and enthusiasm for technology between pathologists, and allows all

Table 6. Discordant cases from the live reporting phase of validation (V2)

Specimen	Digital diagnosis	Glass diagnosis	Preferred diagnosis
Core biopsy	Grade 2 invasive ductal carcinoma	Grade 3 invasive ductal carcinoma	Glass
Vacuum biopsy	Benign phyllodes tumour	Fibroadenoma with inflammation	Glass
Vacuum biopsy	Columnar cell change	Columnar cell change plus atypical intraductal proliferation	Glass
Vacuum biopsy	Sclerosing adenosis	Sclerosing adenosis, small focus of ductal carcinoma <i>in situ</i>	Glass
Vacuum biopsy	Microcysts	Microcysts and weddelite calcification	Glass
Sentinel node	Benign	Isolated tumour cells	Glass
Vacuum biopsy	Columnar cell change	Columnar cell change, single focus of atypical cells	Glass
Vacuum biopsy	Small focus of ductal carcinoma <i>in situ</i>	Benign	Digital

Table 7. Diagnostic confidence with the use of digital and glass slides (0 = not at all confident; 7 = very confident)

	Digital slides		Glass slides	
	Mean confidence (0–7)	Range	Mean confidence (0–7)	Range
Pathologist 1	6.70	4–7	6.80	4–7
Pathologist 2	6.90	4–7	6.90	4–7
Pathologist 3	6.79	0–7	6.99	6–7

**Figure 2.** Diagnostic preferences of individual pathologists.

members of a department, whether enthusiasts or sceptics, to develop digital pathology skills and gain confidence in their abilities. Three specialist breast pathologists viewed 694 complete 'live' breast cases, including large-format slides, stained with H&E, immunohistochemical stains, and special stains. Complete clinically significant concordance was observed in 98.8% of cases, indicating excellent agreement between digital primary diagnosis and glass slide

review. Our findings suggest that pathologists, given access to digital pathology training, and a risk-mitigated diagnostic environment to gain real-world digital reporting experience, can competently and confidently use digital pathology for primary diagnosis as standard practice.

The training and validation process allowed the participant pathologists to identify and discuss areas of digital diagnosis that they found more challenging,

and to identify subtypes of breast case that warrant glass review of digital slides, in order to maintain patient safety and allow for further education of the pathologist and navigation of specific learning curves (e.g. for confident identification of mitotic figures or navigation of lymph nodes). Identification and counting of mitotic figures was consistently highlighted as an area of difficulty for pathologists. Our pathologists perceived two causes of this difficulty in digital reporting: first, they suggested that less contrast between chromatin and the background on digital slides made mitoses harder to identify; and second, they were unable to fine-focus on suspected mitotic figures on digital slides, a function that they often perform on glass slides to confirm the identity of mitoses. A number of workarounds and strategies to mitigate this difficulty could be considered, including the use of immunohistochemistry to highlight mitoses, the use of image analysis software to automate mitotic counts, or mandatory checks of mitotic count on glass slides prior to specimen sign-out, in cases in which mitotic score would affect overall grading of an invasive tumour.

Our pathologists reported perceived greater efficiency in reporting multislide biopsies and large resections on digital slides, which they attributed to a number of factors. One of these was that they no longer had to load and reload glass slides on the microscope stage, and could move swiftly between slides. In addition, they found that the full-screen low-power view of individual slides enabled them to assess lesional architecture with greater ease, and they were able to make measurements with digital tools efficiently and accurately. The relative diagnostic efficiency of pathologists using digital versus glass slides deserves further attention, especially now that we have a growing cohort of pathologists with significant digital microscopy experience to compare fairly with conventional LM. Other benefits of digital reporting noted by our pathologists included rapid access to previous biopsy specimens when reviewing resections, more engaging education and training of junior colleagues, and ergonomic benefits.

As a consequence of this validation study, our validated breast pathologists now report all cases on digital slides as standard, reverting to glass slides following digital examination only for cases fulfilling set criteria (invasive cancers for which differences in mitotic score could affect overall grade, cellular fibroepithelial lesions, cases with radiological confirmation of calcification but no calcium identified on digital slides, and any challenging case not encountered in the validation

phase). Next year, the laboratory at Leeds Teaching Hospitals NHS Trust will commence scanning all histopathology slides for all specialties, and all consultants will complete a validation procedure for the relevant diagnostic subspecialty. As the validation process is completed for each specialty, we will gather more data on challenging areas of digital diagnosis. It is important that individual departments share their experiences with digital pathology, and highlight areas of potential difficulty that can be prioritised in the digital training of their colleagues to ensure a safe transition from glass slide to digital slide reporting.

Conflicts of interest

Leeds Teaching Hospitals NHS Trust has a collaborative research partnership for digital pathology deployment with Leica Biosystems. The authors state that they have no conflicts of interest.

Author contributions

B. J. Williams and D. Treanor designed the study and drafted the manuscript. B. J. Williams collected and analysed data. A. Hanby, R. Millican-Slater, A. Nijhawan and E. Vergheze provided feedback on study design, participated in validation, and gave feedback on drafts of the manuscript.

References

1. Stathonikos N, Veta M, Huisman A, van Diest PJ. Going fully digital: perspective of a Dutch academic pathology lab. *J. Pathol. Inform.* 2013; **4**: 15.
2. Thorstenson S, Molin J, Lundström C. Implementation of large-scale routine diagnostics using whole slide imaging in Sweden: digital pathology experiences 2006–2013. *J. Pathol. Inform.* 2014; **5**: 14.
3. Snead DR, Tsang YW, Meskiri A *et al.* Validation of digital pathology imaging for primary histopathological diagnosis. *Histopathology* 2016; **68**: 1063–1072.
4. Goacher E, Randell R, Williams BJ, Treanor D. The diagnostic concordance of whole slide imaging and light microscopy: a systematic review. *Arch. Pathol. Lab. Med.* 2017; **141**: 151–161.
5. Williams BJ, DaCosta P, Goacher E, Treanor D. A systematic analysis of discordant diagnoses in digital pathology compared with light microscopy. *Arch. Pathol. Lab. Med.* 2017; <https://doi.org/10.5858/arpa.2016-0494-0a> [Epub ahead of print].
6. Pantanowitz L, Sinard JH, Henricks WH *et al.* Validating whole slide imaging for diagnostic purposes in pathology. Guideline from the College of American Pathologists Pathology and Laboratory Quality Center. *Arch. Pathol. Med.* 2013; **137**: 1710–1722.

7. Shaw EC, Hanby AM, Wheeler K *et al*. Observer agreement comparing the use of virtual slides with glass slides in the pathology review component of the POSH breast cancer cohort study. *J. Clin. Pathol.* 2012; **65**: 403–408.
8. Francis A, Thomas J, Fallowfield L *et al*. Addressing overtreatment of screen detected DCIS; the LORIS trial. *Eur. J. Cancer* 2015; **51**: 2296–2303.
9. Al-Janabi S, Huisman A, Willems SM, Van Diest PJ. Digital slide images for primary diagnostics in breast pathology: a feasibility study. *Hum. Pathol.* 2012; **43**: 2318–2325.
10. Campbell WS, Hinrichs SH, Lele SM *et al*. Whole slide imaging diagnostic concordance with light microscopy for breast needle biopsies. *Hum. Pathol.* 2014; **45**: 1713–1721.
11. Reyes C, Ikpatt OF, Nadji M, Cote RJ. Intra-observer reproducibility of whole slide imaging for the primary diagnosis of breast needle biopsies. *J. Pathol. Inform.* 2014; **5**: 5.
12. Feldman M, Rubin B, Moskaluk C *et al*. A large multicenter, retrospective non-inferiority study to evaluate diagnostic concordance between optical vs. digital microscopic diagnosis in 2000 surgical pathology cases. Poster Presentation. USCAP 2017.
13. Randell R, Ruddle RA, Thomas RG, Mello-Thoms C, Treanor D. Diagnosis of major cancer resection specimens with virtual slides: impact of a novel digital pathology workstation. *J. Hum. Pathol.* 2014; **45**: 2101–2106.
14. Electronic code of Federal Regulations. TITLE21—Food and Drugs. Available from: https://www.ecfr.gov/cgi-bin/textidx?SID=7fe8b0ef92a1bc872eec98d2812c9e22&mc=true&tpl=/ecfrbrowse/Title21/21cfrv1_02.t%20pl#0 (accessed May 2017).